

SISMO-C®

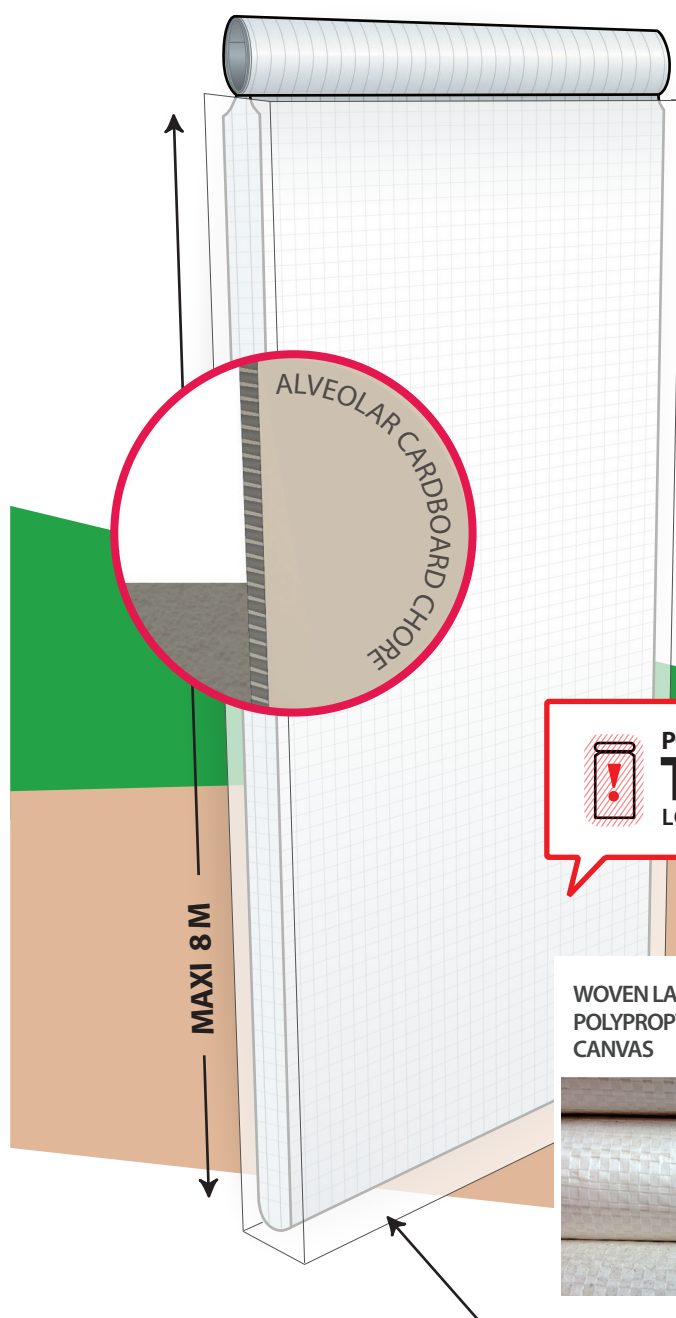
EARTHQUAKE-RESISTANT EXPANSION JOINT

FORMWORK FOR EXPANSION JOINT IN ALVEOLAR
CARDBOARD + SLIPCOVER TO INSERT BETWEEN THE BOTH WALLS
ACHIEVEMENT OF AN EXPANSION JOINT UP TO 8M



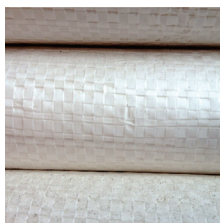
TECHNICAL CHARACTERISTICS & BENEFITS

- Standard / Customised dimensions
- Its extraction allows the achievement of a regular earthquake-resistant expansion joint, without any impurity
- Important height (8M maximum)
- In accordance with the EUROCODE 8
- Light-weighted, easy to handle
- Concrete's pressure resistant
- The polypropylene slipcover does not stick to the concrete, which allows an easy extraction

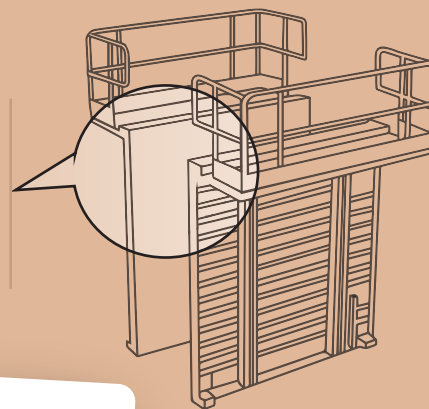


POLYANE SLIPCOVER
TO KEEP
LORS DU COULAGE

WOVEN LAMINATED
POLYPROPYLENE
CANVAS



Compatible
HUSSOR SHUTTER®
OUTINORD SHUTTER®
Customised dimensions



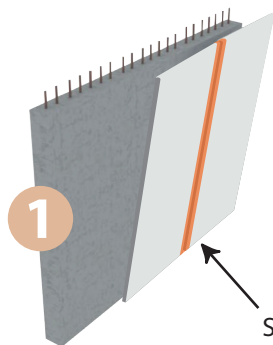
ANY QUESTION ?
04 73 78 57 41

- The polypropylene slipcover allows a complete demoulding
- Expansion joint without any impurity
- Process which allows a safe extraction without any previous shutter handling

siib France
Groupe MABAMURE

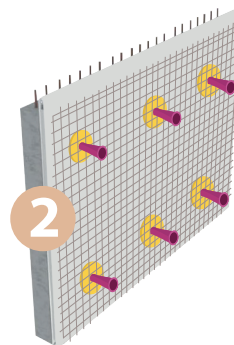
SISMO-C

EARTHQUAKE RESISTANT EXPANSION JOINT

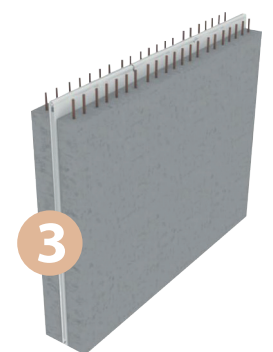


The panels are positioned against the first concrete wall. Threaded rods go through the cardboard.

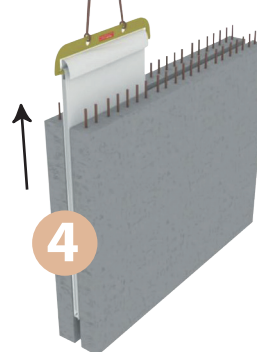
Scotcher les plaques



The strut cones are placed through the distribution washer. The frame is set up.



The shutters are fixed and the second concrete wall can be poured.



The SISMO-C is removed by means of the extraction tool supplied, leaving a perfect expansion joint between the both walls (EUROCODE 8 compliance).

- The SISMO-C can be removed with an extraction strenght between 500 & 1000 Kg.
- The extraction is much more easier after the drying period because the concrete is contracted



ENVIRONMENTAL PROTECTION

Cardboard and Polypropylene
100% recyclable