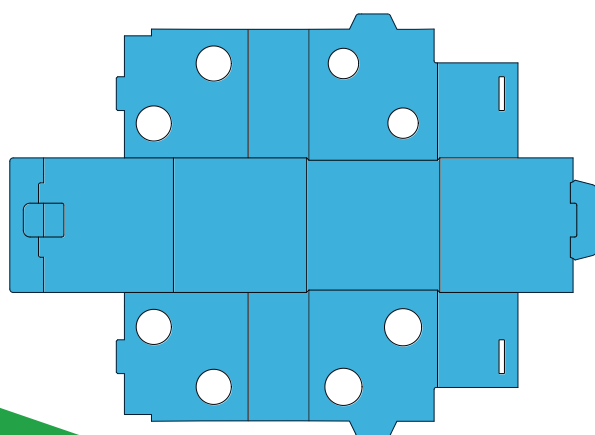


RÉZABOITE VOILE *ECO*

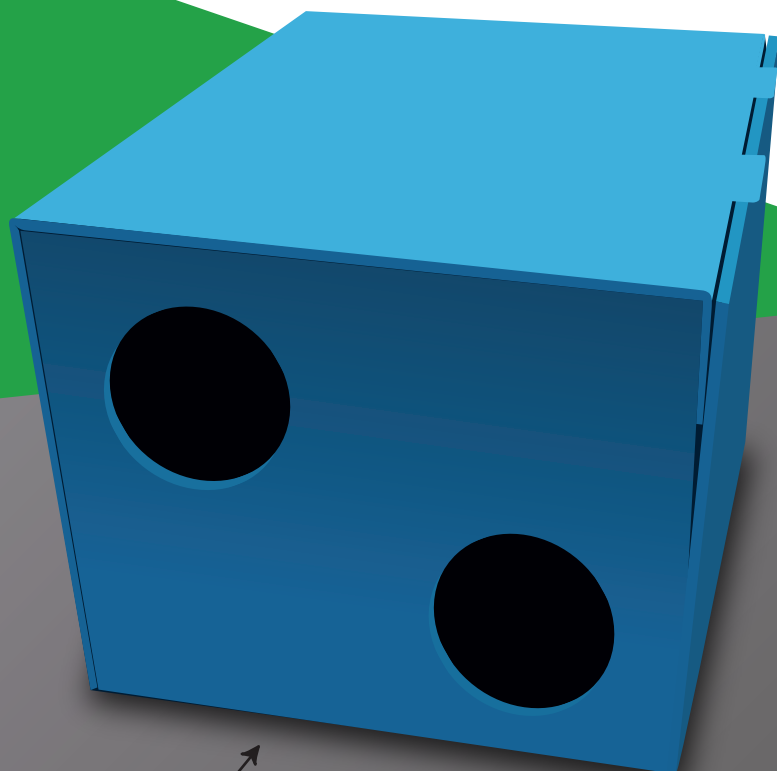
FORMWORK SYSTEM FOR STRUCTURAL OPENINGS IN SHELLS

CREATION OF OPENINGS FOR SERVICE DUCTS (CMV, WASTEWATER, AIR-CONDITIONING, TV, ETC.)



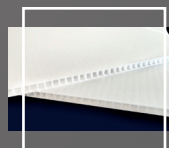
CHARACTERISTICS & ADVANTAGES

- In stock
- Delivered flat-packed, easy to assemble
- Weatherproof
- Resistant to the pressure of concrete
- Does not adhere to concrete, easy to remove
- Light, easy to handle
- Simplified storage and logistics



Structural openings in shells

AKYLUX®



Cellular polypropylene constituted from carbon and hydrogen

QUESTION ?
04 73 78 57 41

- Drilling holes for magnetic cones
- Product reserved for housing projects
- Can be used as is or assembled with adhesive

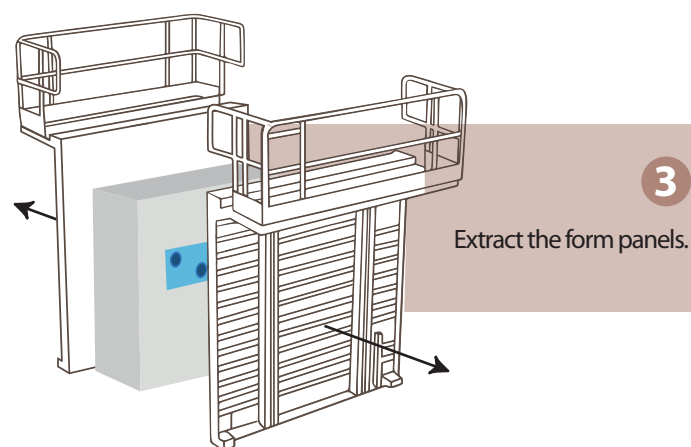
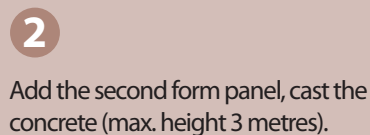
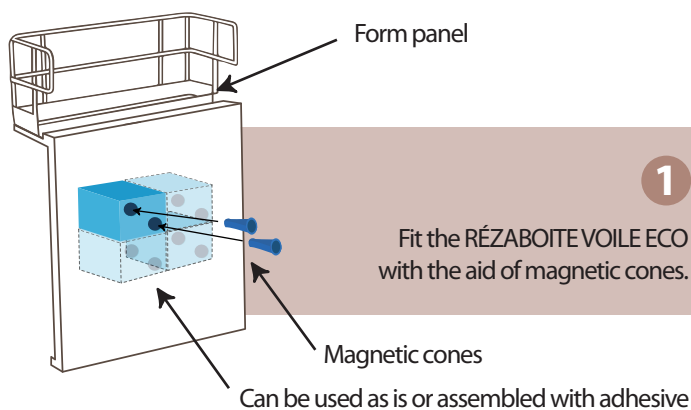


siiB France
G r o u p e M A B A M U R E

RÉZABOITEVOILE ^{ECO}

FORMWORK SYSTEM FOR STRUCTURAL OPENINGS IN SHELLS

IMPLEMENTATION



Fields of application

Structural openings in reinforced concrete shells for builders and housing projects. The RÉZABOITE VOILE ECO notably replaces polystyrene, wood and cardboard on HQE projects.

Instructions for use

The RÉZABOITE VOILE ECO saves time due to its placement method and ease of use; one only has to fold back the sheet of AKYLUX and the opening is operational in 30 seconds.

Dimensions available in stock

Dimensions (cm)	Thickness (cm)	Parts per packet
15 x 15	20	25
20 x 20	20	25
25 x 25	20	25
30 x 30	20	25



ENVIRONMENTAL PROTECTION

100% recyclable polypropylene
Can be incinerated without releasing toxic fumes, burns without leaving any residue